

Date: 19/07/2022

Time: 0900hrs

Subject: BULLETIN NO: 3

From: The Clerk of the Course
 To: All competitors / crew members
 Number of pages: 4
 Attachments: 3

Approved: Motorsport Australia – ARC Sporting Manager – 19/07/2022

1. Event Phone Numbers
2. Program corrections
3. Entry corrections
4. QRC Itinerary correction
5. QRC/Clubman/Novice – Light-Fitting Zone
6. Attachment
 1. Lock & Load Rally Village Service Bay allocations
 2. Service Bay Allocations
 3. Road Book Corrections

1. EVENT PHONE NUMBERS:

- General Rally Enquiries 0493 501 535
- **Emergency (Event Only) 0493 534 077**
- Emergencies 000

2. PROGRAM CORRECTIONS

(Note Time and location adjustments)

WEDNESDAY	20th July 2022	
1200hrs	Rally Office opens Documentation distribution commences.	<i>Rally HQ Secretariat Office, Gympie Showgrounds</i>
1800hrs	Rally Office closes	<i>Rally HQ Secretariat Office, Service Park</i>
THURSDAY	21st July 2022	
0900hrs	Rally Office opens Documentation distribution (All crews)	<i>Rally HQ Secretariat Office, Service Park</i>
1300 – 1700hrs	RallySafe Tracking GPS units available	<i>Secretariat Office, Service Park</i>
1300 – 1700hrs 1230-1630hrs	Afternoon test session	<i>Imbil Forest</i>
2000hrs	Documentation distribution closes Rally Office closes	<i>Rally HQ Secretariat Office, Service Park</i>
FRIDAY	22nd July 2022	
1200 – 2000hrs 1800hrs	RallySafe Tracking GPS units available	<i>Scrutiny Shed, Secretariat Office, Service Park</i>

3. QRC ITINERARY CORRECTION

4B	Flexi-Service Holding OUT / Service IN				0:20	13:22
	Flexi-Service A	(46.26)	(108.93)	(155.19)	0:30	
4C	Service OUT / Regroup IN					13:52
	Regroup A				0:20	
4D	Regroup OUT					14:12

4. EVENT ENTRY CHANGES

Motorsport Australia RSEA Rally Championship											
Car No.	Competitor (Entrant) / Sponsor	Driver Co-Driver	State	Vehicle Make Model	ARC	Prod Cup	2WD Cup	Jun Cup	Classic Cup	Novice	Other
16	Peterson Motorsport	Aidan PETERSON Mitchell NEWTON	TAS TAS	Daihatsu Charade	*		*	*			

Queensland Rally Championship & Clubman Series											
Car No.	Competitor (Entrant) / Sponsor	Driver Co-Driver	State	Vehicle Make Model	QRC	QRC 2WD	Clubman	Jnr Driver	Jnr Co-Driver	Novice	Class
32	SR Automotive	Stewart REID Jenny COLE	QLD NT	Ford Escort Mark II	*	*					Classic

5. QRC/CLUBMAN/NOVICE CREWS

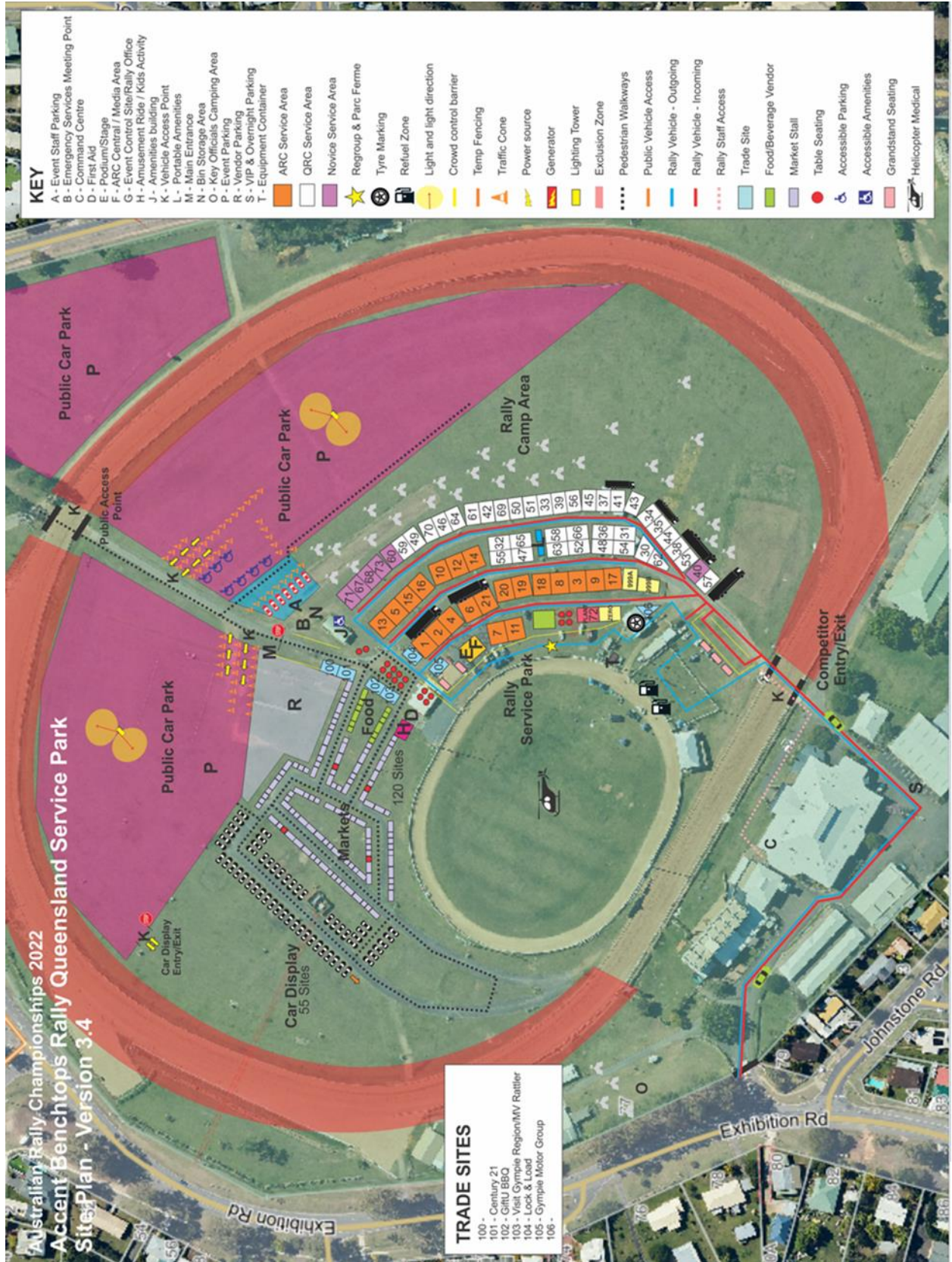
A Light-fitting Zone will be available following SS7 “Muster II” and prior to RZ3. This Zone will be located within the Service Park. Two service crew members will be permitted in the Light-fitting Zone for the purpose of fitting additional lights only. No other work is to be carried out on the car in the Zone.

SS7	MUSTER II	7.16				15:57
	Light-fitting Zone				0:15	
RZ3	Refuel - Gympie Service Park			(18.42)		
	Distance to next refuel	(15.20)	(60.02)	(75.22)		
8	Reid Rd		38.69	45.85	1:00	17:12
SS8	BROOYAR WEST II	15.20				17:15

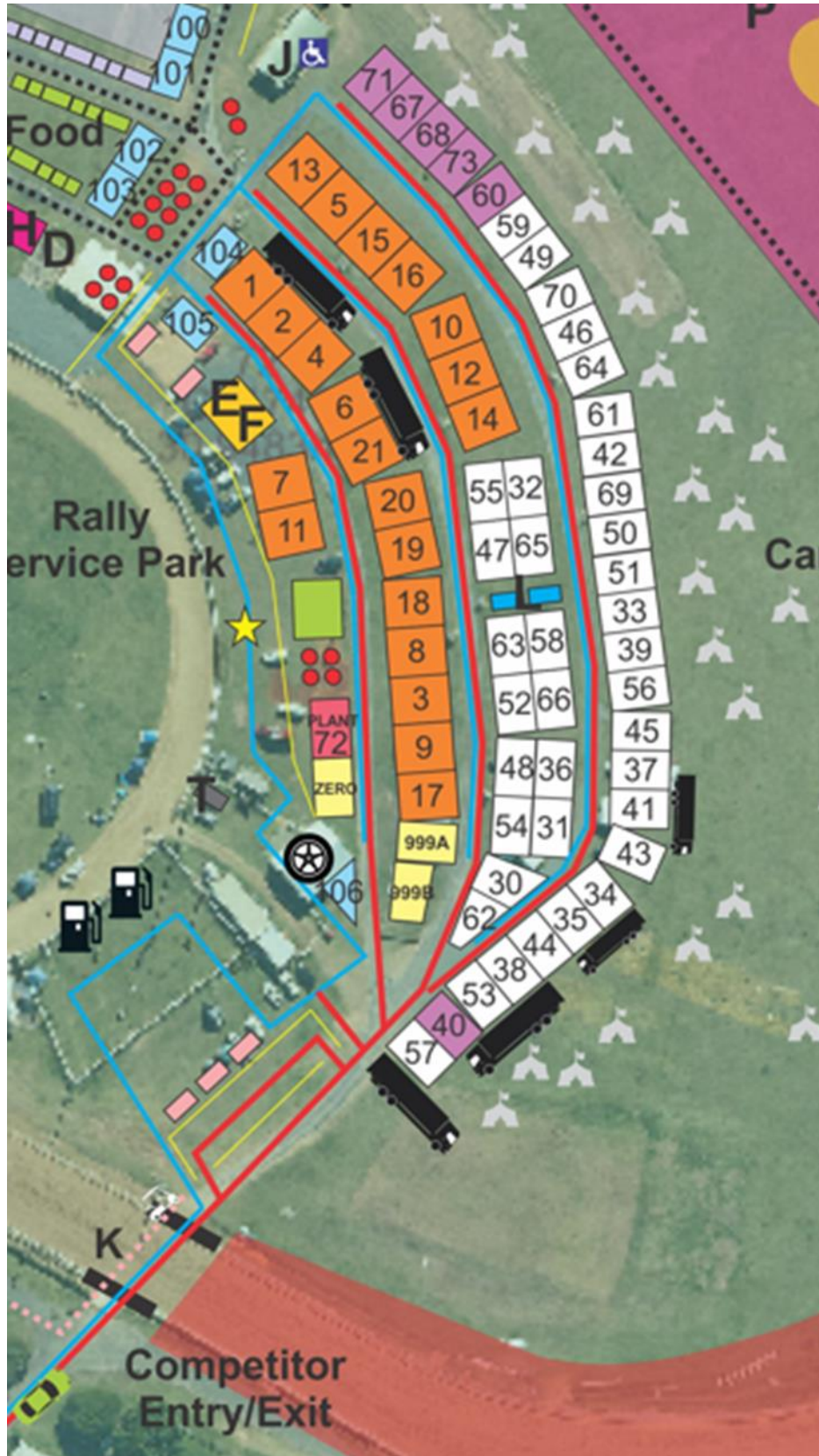


ATTACHMENT 1

“LOCK & LOAD TRANSPORT TIE-DOWNS” RALLY VILLAGE



ATTACHMENT 2
SERVICE BAY ALLOCATIONS



ATTACHMENT 3

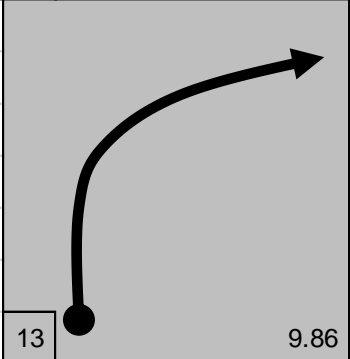
ROAD BOOK CHANGES

Road repairs throughout the rally area have occurred over the past few days. Due to these repairs, there has been a number of changes, additions and deletions made to the road book instructions. They are listed below:

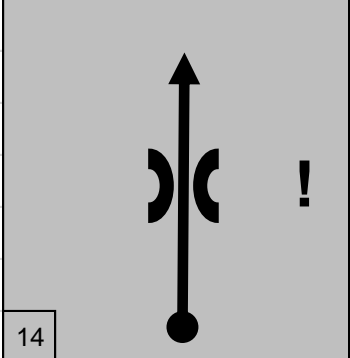
SATURDAY 23 July 2022

A. Special Stage 1 & 5 - KANDANGA I & KANDANGA II

1. Page 21, Total 5.96, Part 0.26, Box 13: **CHANGE INSTRUCTION TO:**

					
5.96	0.26				RGR
			13	9.86	

2. Page 21, **ADD NEW INSTRUCTION:** Total 6.19

					
6.19	0.23				! Caution Dip
			14		

3. Page 25, Total 12.88, Part 0.10, Box 31: **DELETE INSTRUCTION**

B. Special Stage 2 & 6 - AMAMOOR I & AMAMOOR II

4. Page 32, **ADD NEW INSTRUCTION:** Total 6.06

6.06	0.40		RGL		

5. Page 33, Total 8.08, Part 0.93, Box 21: **CHANGE INSTRUCTION TO:**

8.08	0.93		 then crest then Care RGL		
			S26 22.344' / E152 34.616'		

C. Special Stage 3 & 7 - MUSTER I & MUSTER II

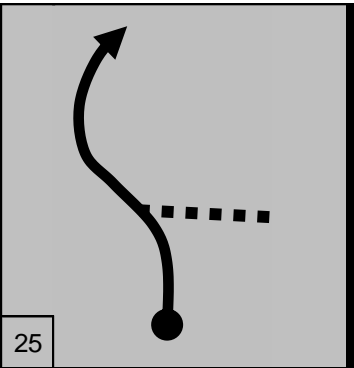
~~6.~~ Page 36, Total 1,07, Part 0.32, Box 6: **DELETE INSTRUCTION**

D. Special Stage 4 & 8 – BROOYAR WEST I & BROOYAR WEST II

7. Page 49, Total 9.32, Part 0,14, Box 17: **CHANGE INSTRUCTION TO:**

9.32	0.14		! Care Narrow Earth Bridge Don't cut		

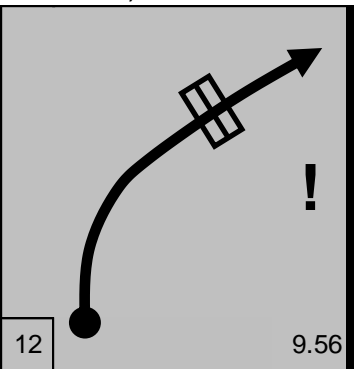
8. Page 50, **ADD NEW INSTRUCTION:** Total 12.63

					
12.63	0.63			KL	
			25		

SUNDAY 24 July 2022

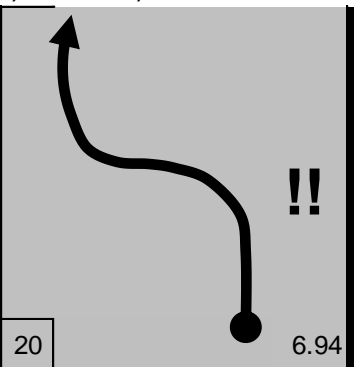
E. Special Stage 9 & 12 – BROOYAR EAST I & BROOYAR EAST II

9. Page 62, Total 7.96, Part 0.44, Box 12: **CHANGE INSTRUCTION TO:**

					
7.96	0.44			! Care Grid	
			12	9.56	

10. Page 63, Total 10.48, Part 0.34, Box 19: **DELETE INSTRUCTION**

11. Page 63, Total 10.58, Part 010, Box 20: **CHANGE INSTRUCTION TO:**

					
10.58	0.10			RGL downhill - slippery then 90m RGR, then !! Caution Slippery to Total 12.93	
			20	6.94	

12. Page 64, Total 10.95, Part 0.22, Box 22: **DELETE INSTRUCTION**

13. Page 64, Total 11.65, Part 0.17, Box 24: **CHANGE INSTRUCTION TO:**

11.65	0.17				
					!! Caution
					Rough slippery creek crossing

14. Page 64, **ADD NEW INSTRUCTION:** Total 11.88

11.88	0.23				!!! EXTREME CAUTION
					Deep gutter then 80m
					!! Caution
				RGL into rough, wet creek crossing	

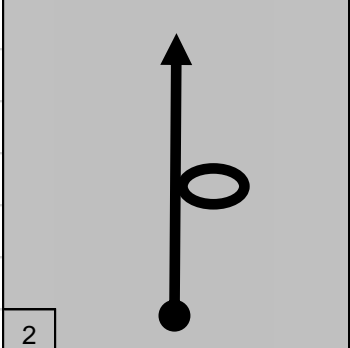
15. Page 64, Total 11.96, New Part 0.08, Box 25: **DELETE INSTRUCTION**

16. Page 65, **ADD NEW INSTRUCTION:** Total 12.43

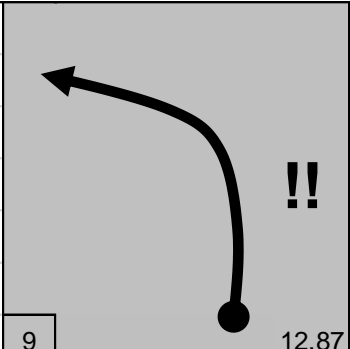
12.43	0.35				
					! Care
					Gutter across road

F. Special Stage 10 & 13 – GLASTONBURY I & GLASTONBURY II

17. Page 71, **ADD NEW INSTRUCTION:** Total 1.82

				
1.82	1.82			
			2	

18. Page 72, Total 7.19, Part 0.74, Box 8: **CHANGE INSTRUCTION TO:**

				
7.19	0.74			
			9	12.87

19. Page 72, Total 7.75, Part 0.45, Box 10: **DELETE INSTRUCTION**

20. Page 73, Total 8.17, Part 0.42, Box 11: **DELETE INSTRUCTION**

****Once you have made these changes in your road book, please ensure you have adjusted the "Part" distances accordingly.***

Note that **mini-Caution boards** have been erected for reconnaissance according to the original road book instructions, but due to the road works, there may not now be any hazard at those specific locations.

Brian Everitt

Clerk of the Course
19 July 2022

