

Date: 19/05/2021

Time: 1400hrs

Subject: BULLETIN NO: 7

From: The Clerk of the Course

To: All competitors / crew members

Number of pages: 2

Attachments 0

Approved: Motorsport Australia – ARC Sporting Manager – 19/05/21

1. Service Park access restrictions

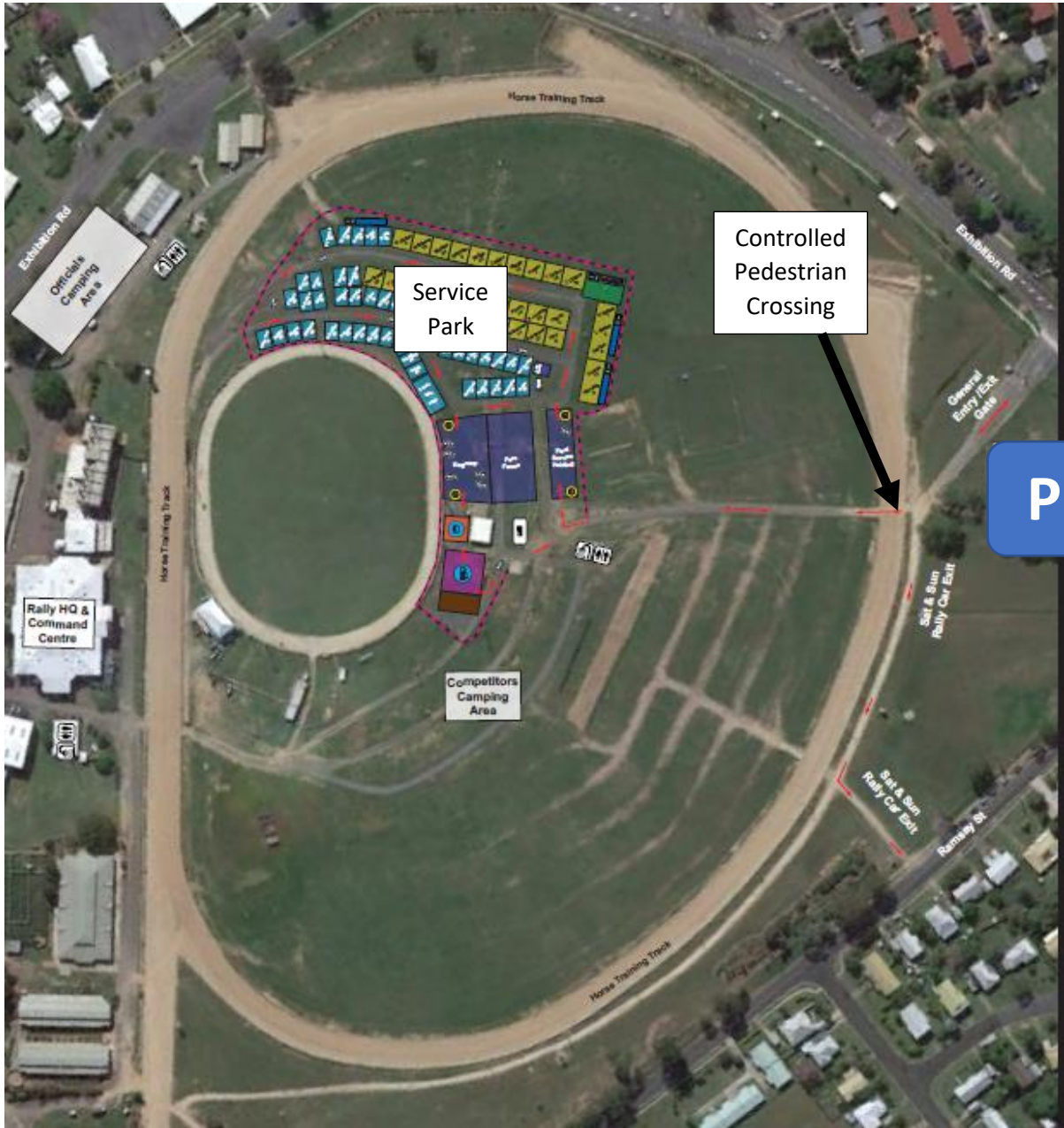
As part of our Agreement to use the Gympie Showgrounds, there is a stipulation that no one is permitted to cross the horse training track at any point surrounding the Service Park between 4am and 6am on the mornings of Thursday 20, Friday 21 and Saturday 22 May. Please ensure you remember and comply with this requirement as there will be absolutely no excuses or exemptions.

This means that any vehicles and/or equipment required prior to 9am for Testing on Thursday, 9am for Recce on Friday and prior 8am on Saturday are to be placed in the overnight Car Park area outside the training track ring.

The Showgrounds area is fenced, and the access gates to the Car Park area will be closed at 10pm on Thursday, Friday, Saturday and Sunday nights. They will re-open at 6am each morning.

To facilitate pedestrian access, there will be a controlled pedestrian crossing in operation between the Service Park and the Car Park area from 6am to 9am on Thursday and Friday, and from 6am and 8am on Saturday. This is for pedestrian access only. See map included in this Bulletin.

Additionally, there will be a dedicated roving Security Service in operation between 6pm and 6am on Friday and Saturday nights.



Brian Everitt
Clerk of the Course
19 May 2021