

Date: 16/05/2021

Time: 0900hrs

Subject: BULLETIN NO: 6

From: The Clerk of the Course
To: All competitors / crew members
 Number of pages: 3
 Attachments 0

Approved: Motorsport Australia – ARC Sporting Manager – 15/05/21

1. Amendment to Supplementary Regulations

- Article 21 – On Thursday 13 May the Queensland Government announced the removal of the requirement for outdoor sporting activities to collect contact tracing information. Motorsport Australia has endorsed this decision and the consequent removal of the requirement for crews to QR scan the Attendance Record on arrival at the Gympie Showgrounds Service Park or other meet points. Article 21 is amended accordingly.

2. Turbo sealing and weighing of cars – Friday 21 May

- Refer to the schedule below for report times to the Scrutineer’s Shed in the Service Park. Turbos are to be presented cold.

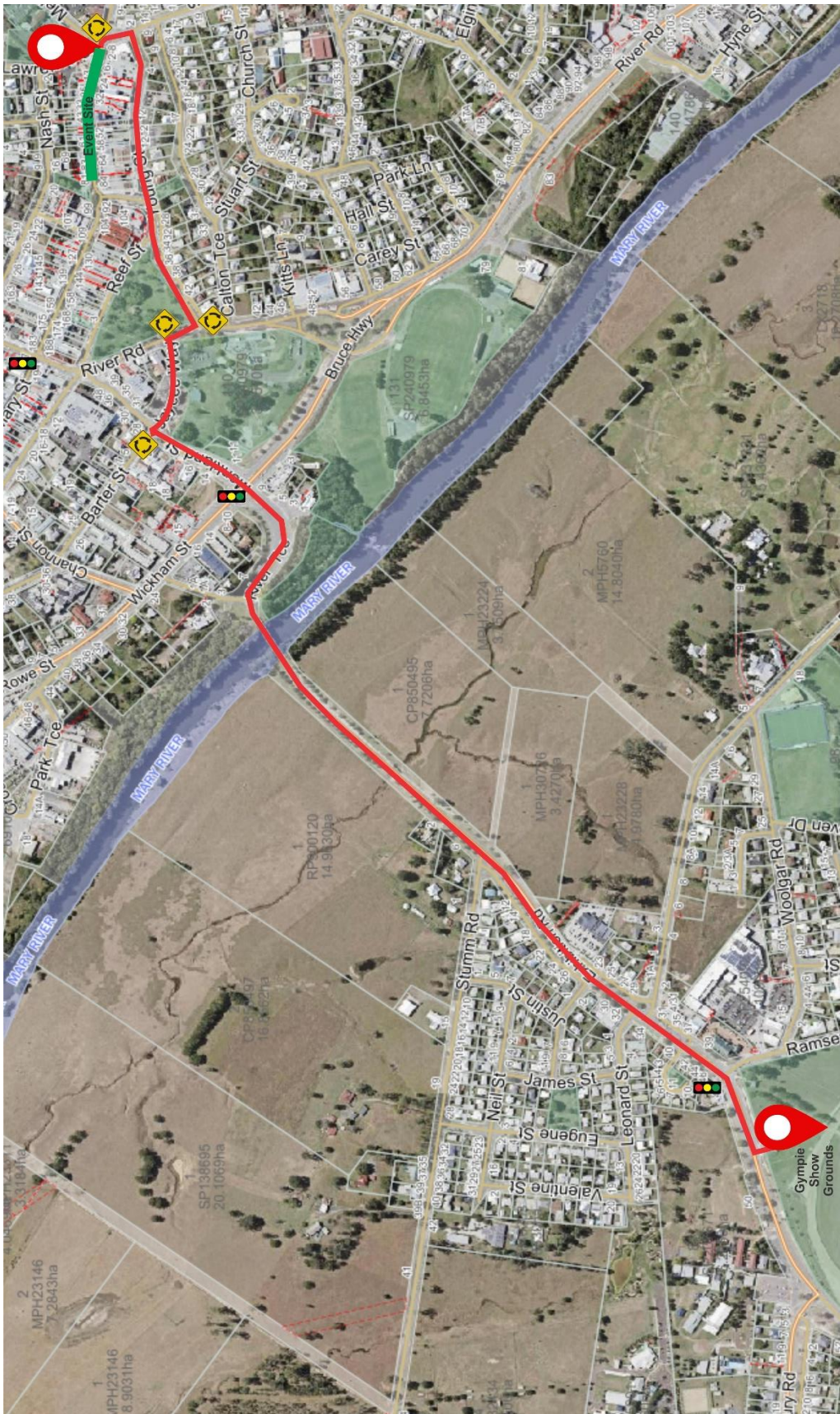
<i>Report times (hrs)</i>	<i>Car numbers</i>
09:00 – 09:30	1-7
09:30 – 10:00	8-13
10:00 – 10:30	14-19
10:30 – 11:00	20-25
11:00 – 11:30	27,28,29,40,41
11:30 – 12:00	42-44, 46-48
12:00 – 12:30	51,52,62,65,72,76
12:30 - 13:00	80-82,85,69
14:00	Represents

3. ARC crews competing in the QRC

- Crews will be held in the Regroup area after Saturday RZ2 for up to approximately 50 minutes to enable QRC only competitors to follow them out at 2-minute intervals en route to SS 13.

4. “Wheels on Mary” - Friday 21 May

- Included are the Maps and directions to and from the event site. Cars and their crews are to start lining up at the Exhibition Rd exit gate from the Showground at 17:30hrs ready for a prompt departure at 18:00hrs. Crews should endeavour to have their cars placed in numerical order starting at car 1 to facilitate parking on arrival at the venue. Following the display, all cars are to be returned to the Service Park for secure parking and readiness for the Saturday start.



DIRECTIONS TO RETURN TO SHOWGROUNDS

- Turn LEFT onto Smithfield Street
- Turn RIGHT onto Young Street
- Continue straight along Young Street to Roundabout (River Road)
- Turn RIGHT at Roundabout onto River Road (take 2nd Exit on Roundabout)
- Turn LEFT at Roundabout onto Jaycee Way (take 1st Exit on Roundabout)
- Turn LEFT at Roundabout onto Monkland Street (take 1st Exit on Roundabout)
- Travel straight along Monkland Street to main set of traffic lights (Monkland Street/Bruce Highway)
- Proceed straight through traffic lights into Exhibition Road
- Travel along Exhibition Road for approximately 1.5km, over bridge, through set of traffic lights
- Turn LEFT into Showgrounds gate

DIRECTIONS TO EVENT SITE

- Turn RIGHT onto Exhibition Road
- Travel straight along Exhibition Road for approximately 1.5km (through traffic lights, over bridge, through to set of main road traffic lights - Monkland Street/Bruce Highway)
- Proceed straight through traffic lights into Monkland Street
- Turn RIGHT at Roundabout (take 3rd Exit on Roundabout into Jaycee Way)
- Turn RIGHT at Roundabout to turn into River Road (take 2nd Exit on Roundabout)
- Turn LEFT onto Young Street at Roundabout (take 1st Exit on Roundabout)
- Continue straight along Young Street to intersection (Young Street/Calton Hill)
- Turn LEFT onto Calton Hill
- Turn LEFT at Roundabout into Mary Street (take 1st Exit into Mary Street)



Brian Everitt
 Clerk of the Course
 16 May 2021